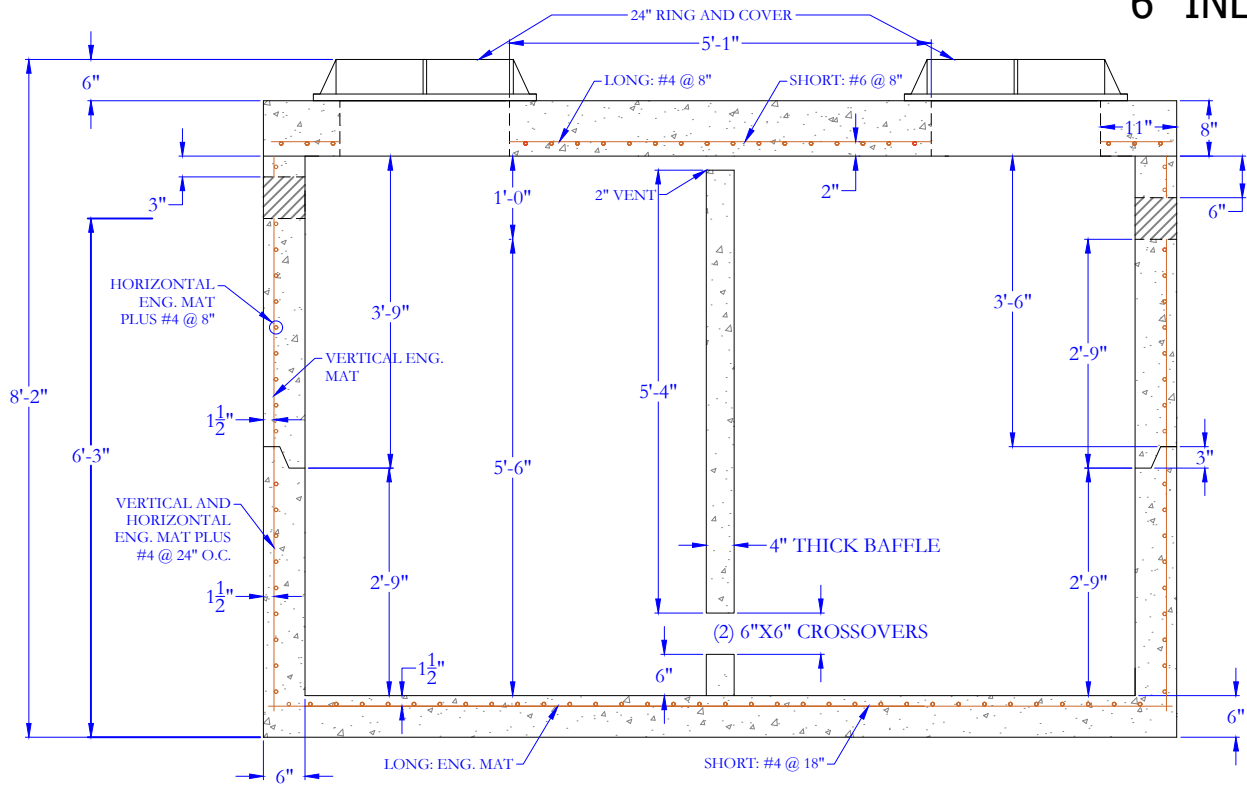


6" INLET AND O



SPECIFICATIONS:

CONCRETE: Class 1 concrete with design strength of 5000 PSI at 28 days. Unit is of monolithic construction at floor and first stage of wall. Baffle is slide in type.

REINFORCEMENT: Grade 60 reinforced with steel rebar conforming to ASTM A-615 on required centers.

C.I. CASTINGS: Cast Iron Ring & Cover shall be nominal 24" and traffic duty

ENGINEERING DATA:

Grease Trap is structurally and hydraulically engineered conforming to Louisiana Department of Health & Hospitals Plumbing Code. Nominal liquid capacity as indicated on plan.

Field excavation and preparation shall be completed prior to delivery of grease trap. Use dimensional data as shown.

GCP-2000GT

2000 GALLON GREASE TRAP

SCALE: NOT TO SCALE DATE: 06/21/18 DRAWN: CM CHECKED:

28021 Coker-Vail Road
Phone (225) 567 - 2700

Holden, LA 70744
Fax (225) 567 - 3089

www.gaineyconcrete.com

