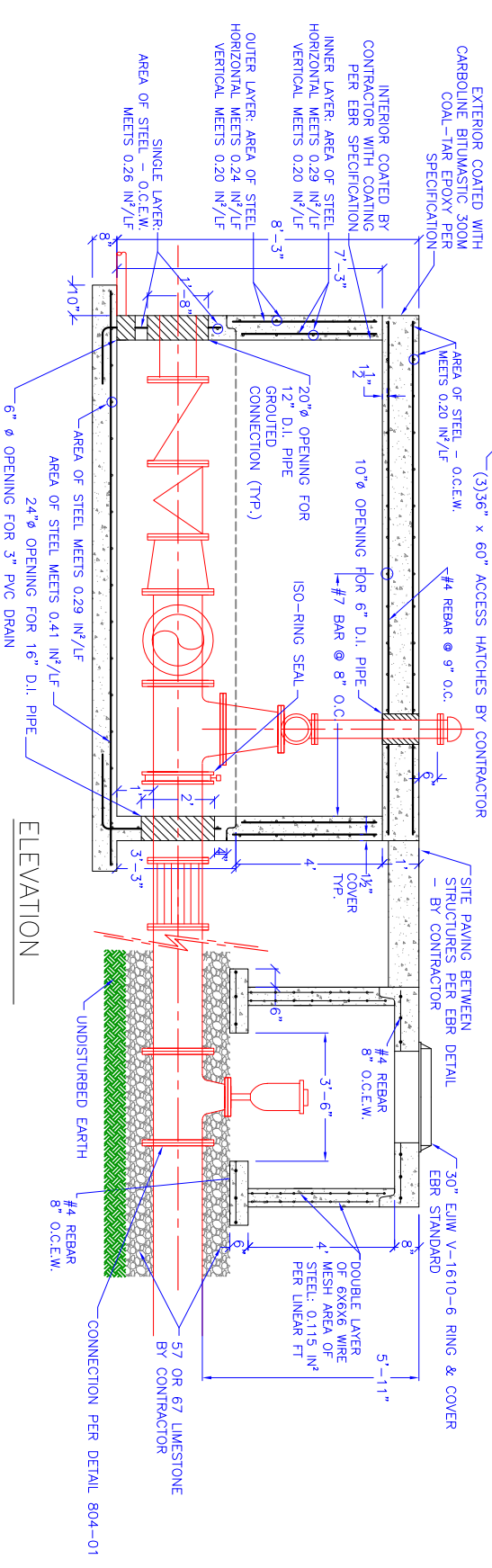


PUMP STATION

PLAN

- NOTES:
1. CLASS 1 AIR-ENTRAINED CONCRETE WITH COMPRESSIVE STRENGTH OF 3500 PSI AT 28 DAYS.
 2. TYPE I/II PORTLAND CEMENT TO BE USED (SUITABLE FOR TYPE II CEMENT PER ASTM C-150)
 3. REINFORCING IN WALLS, LID & BASE AS NOTED - ALL GRADE 60 MINIMUM.
 4. PRECAST CONCRETE STRUCTURE DESIGNED TO MEET H-20 TRAFFIC LOADING.
 5. SEALANT (FIELD) APPLIED BY CONTRACTOR AND DOUBLED AT EACH JOINT).
 6. PROVIDE ADDITIONAL REINFORCING AROUND PIPE OPENINGS EQUAL TO THE BARS INTERRUPTED BY THE OPENING - 1/2 EACH SIDE.
 7. ROOF HATCHES ARE NOT TRAFFIC RATED.

REFERENCE SITE LAYOUT FOR PLACEMENT OF ARV MANHOLE



ELEVATION

gainey's
CONCRETE PRODUCTS



28021 Coker-Vail Road
Phone (225) 567 - 2700

www.gaineyconcrete.com

Holden, LA

Fax (225) 567 - 3089

13'-0" X 12'-6" PACKAGE VALVE VAULT

SCALE:
NTS